

## User Manual for 3.5' Pi LCD

For Windows System Users:

### Step1.Check What we provided in our DVD.

As bellow:

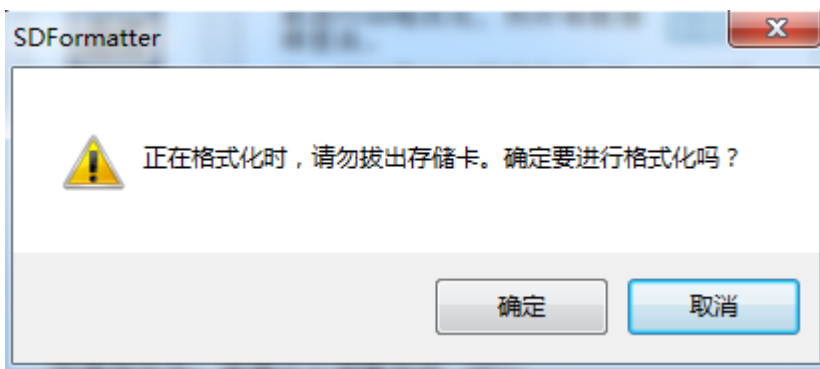
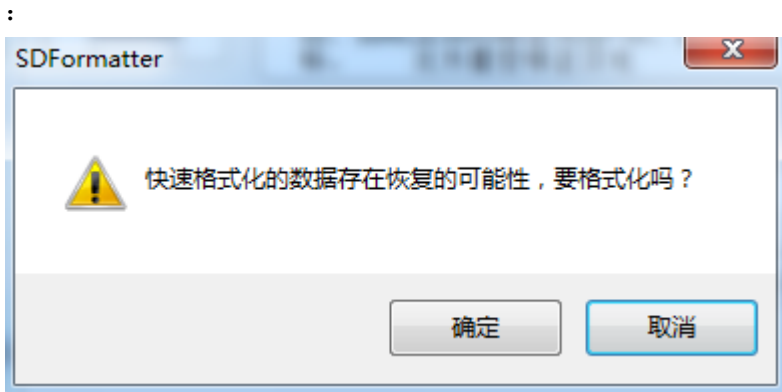
名称	修改日期	类型
document	2014/9/22 20:37	文件夹
IMAGE	2014/9/22 20:37	文件夹
Interface	2014/9/22 20:46	文件夹
software	2014/9/22 20:37	文件夹

### Step2.Format your Micro-SD Crad.

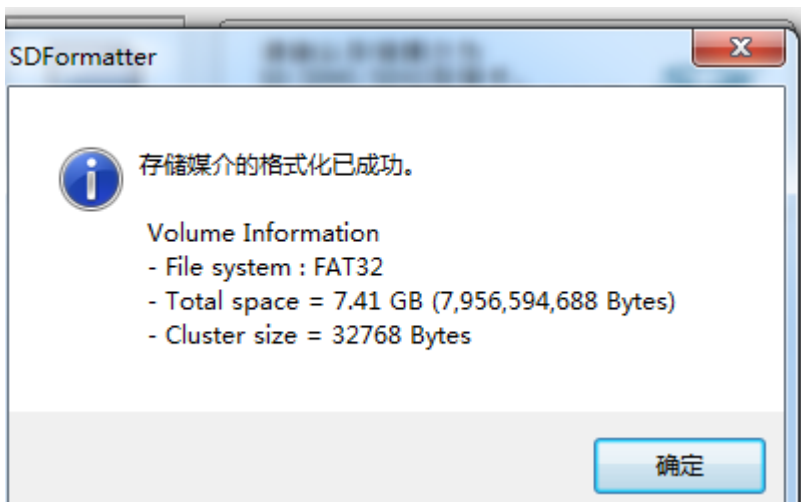
1. Prepare one 8GB MicroSD Card.
2. Open:software\Panasonic\_SDFormatter\ SDFormatter.exe,



3. Click the “格式化” Button.

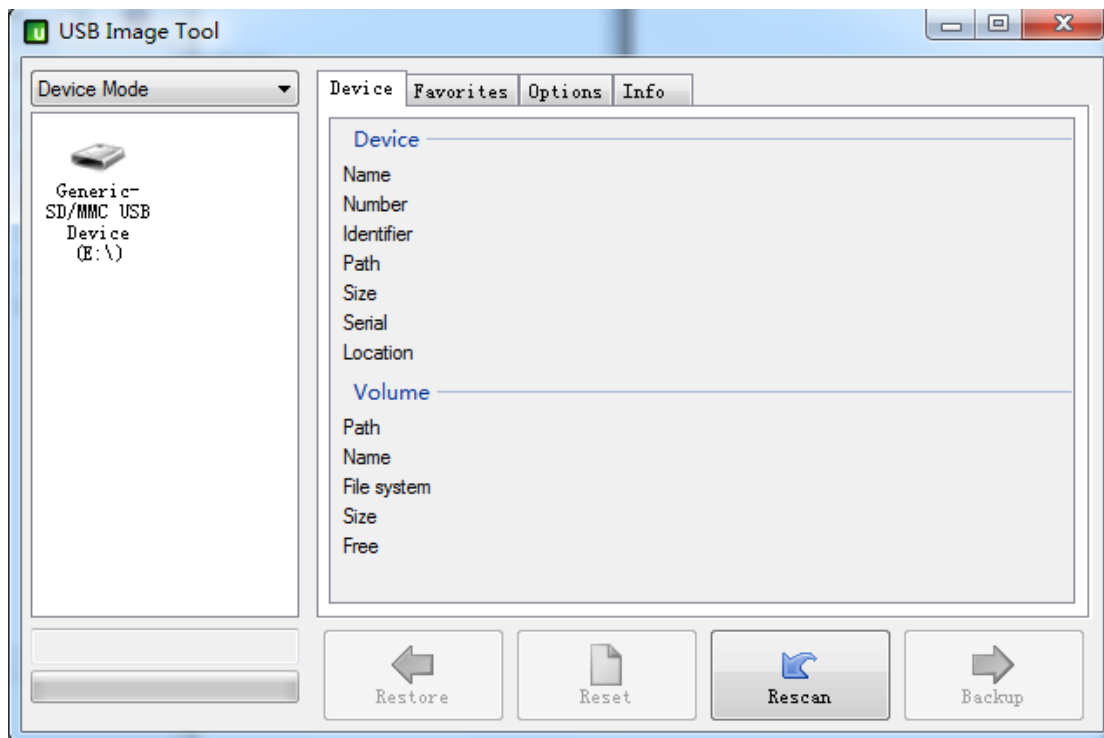


After format,It show as bellow:

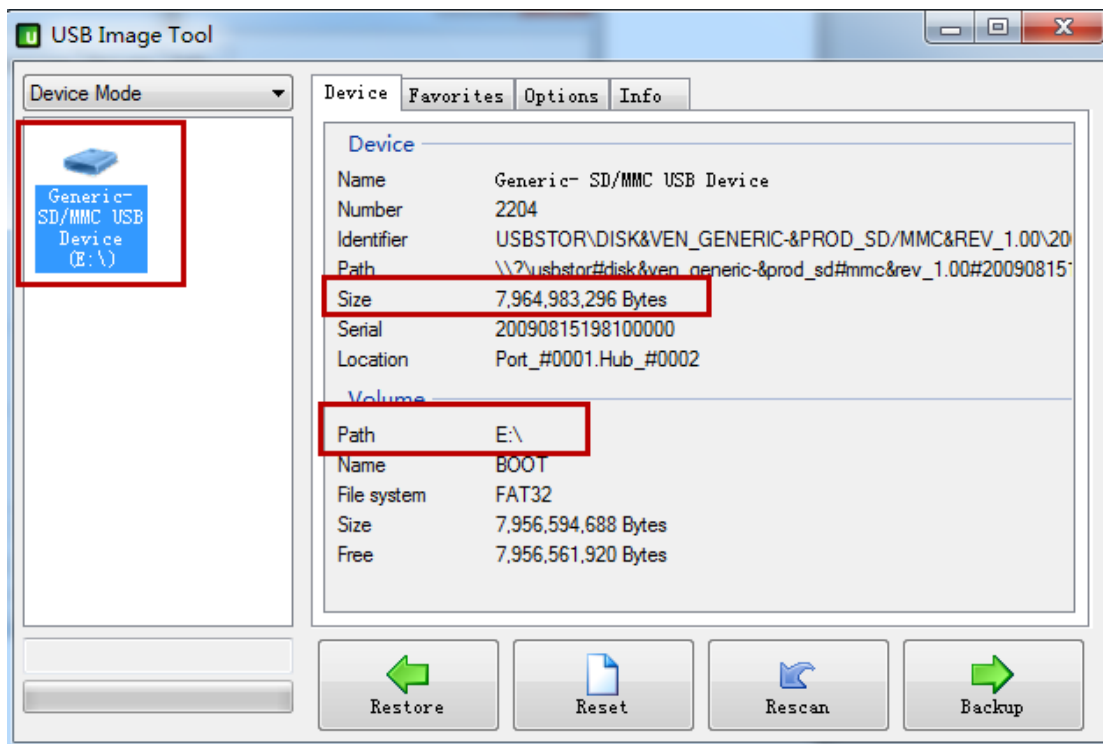


## Step3.Copy the Image to SD Card.

1. open: software\usbit-162\ USB Image Tool.exe:

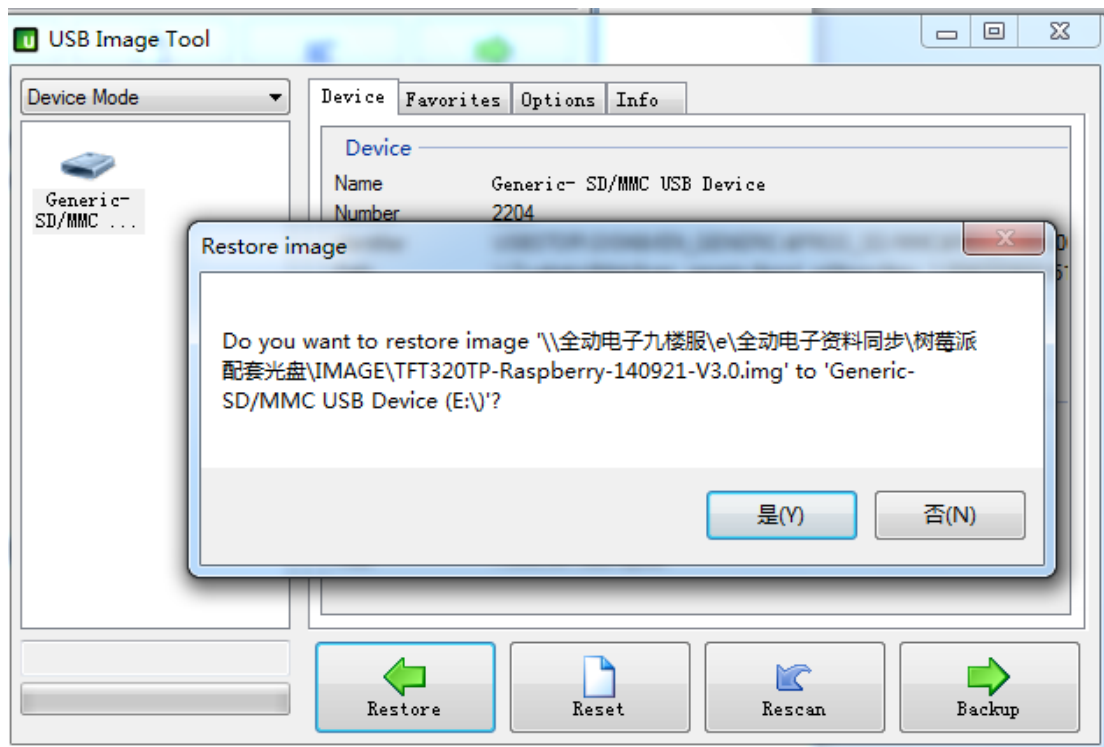


2. Check the Size, and Path is correct

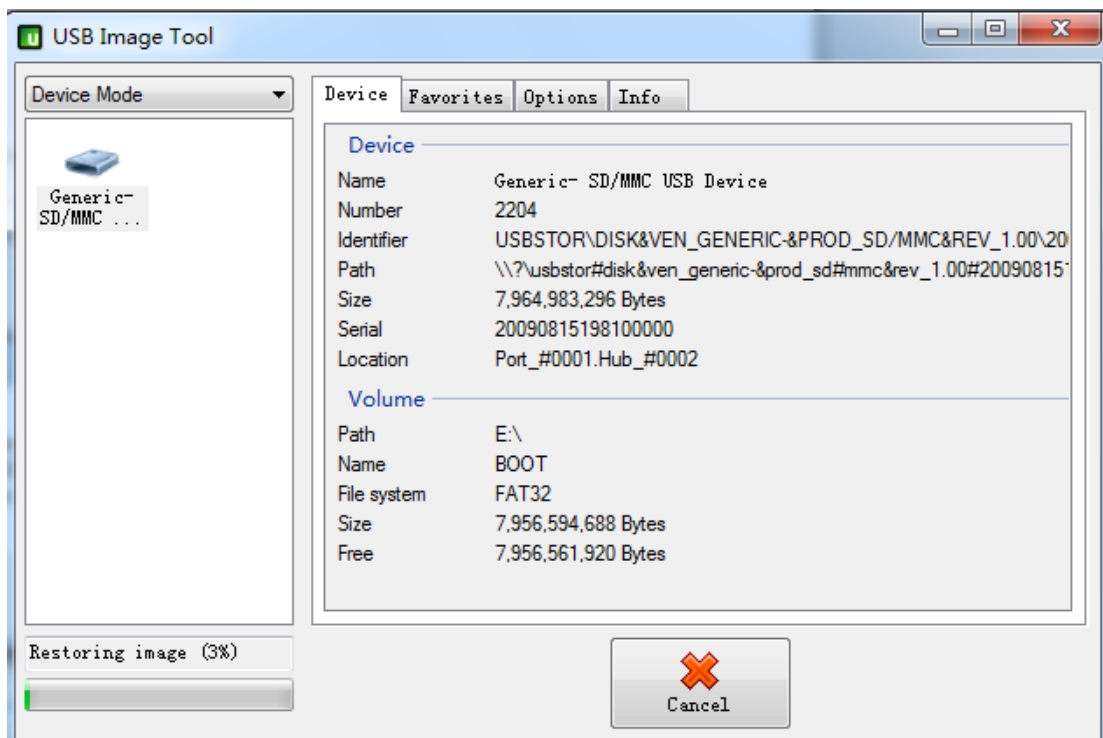


3. Click button "Restore", Select the Image file we Provided in DVD:  
\\IMAGE\LCD35-141202.img

Select "Y":

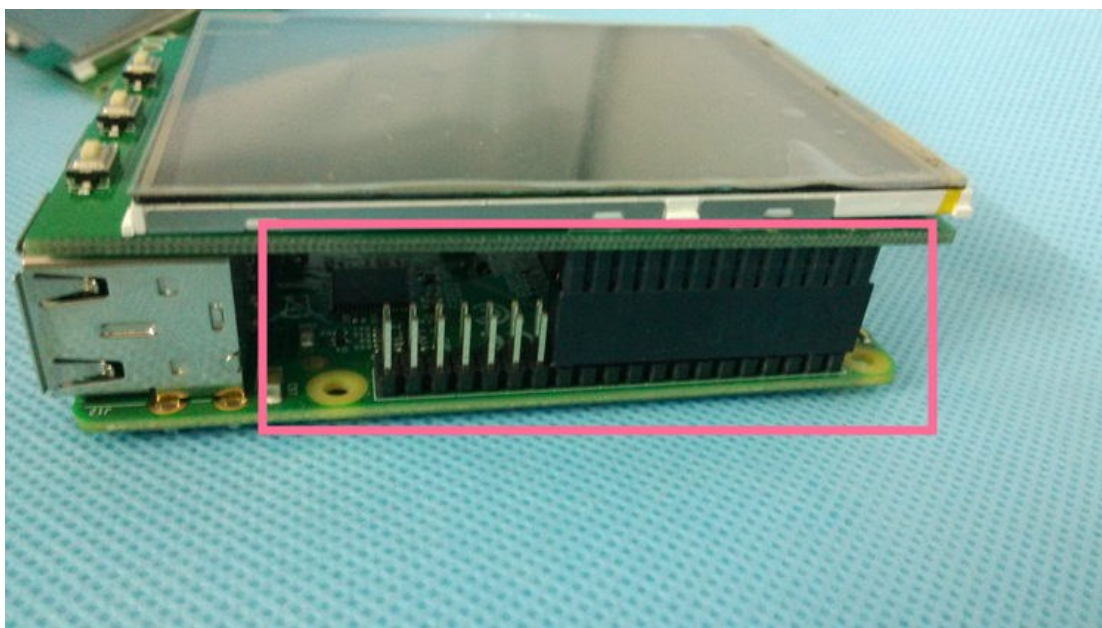


4. Now start Image copy, wait a few minutes:。



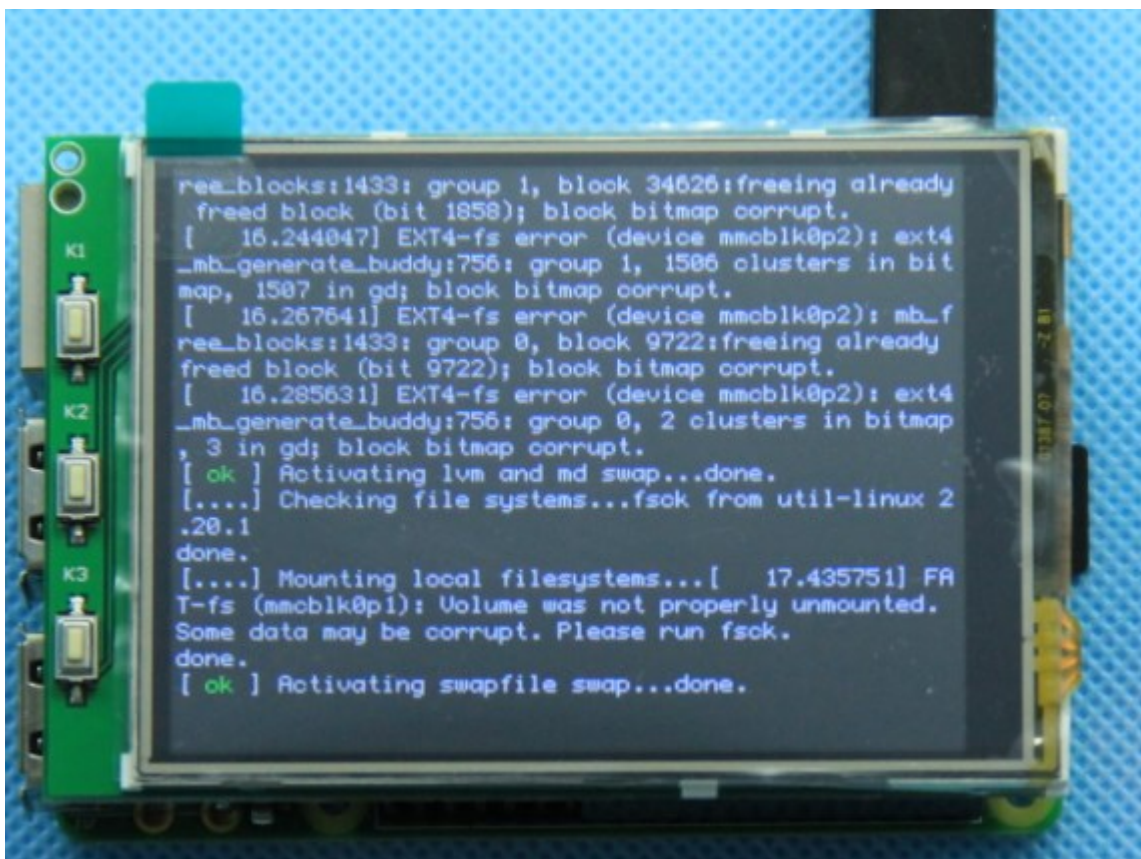
## Step4. Install the 3.2" LCD

1. insert the 3.2" LCD to Raspberry-Pi B/B+ board as bellow:



2.insert your SD card.

3.Power ON ,and wait 15Sec,you will see the Boot screen as bellow:





That's all ,Enjoy your Pi.